

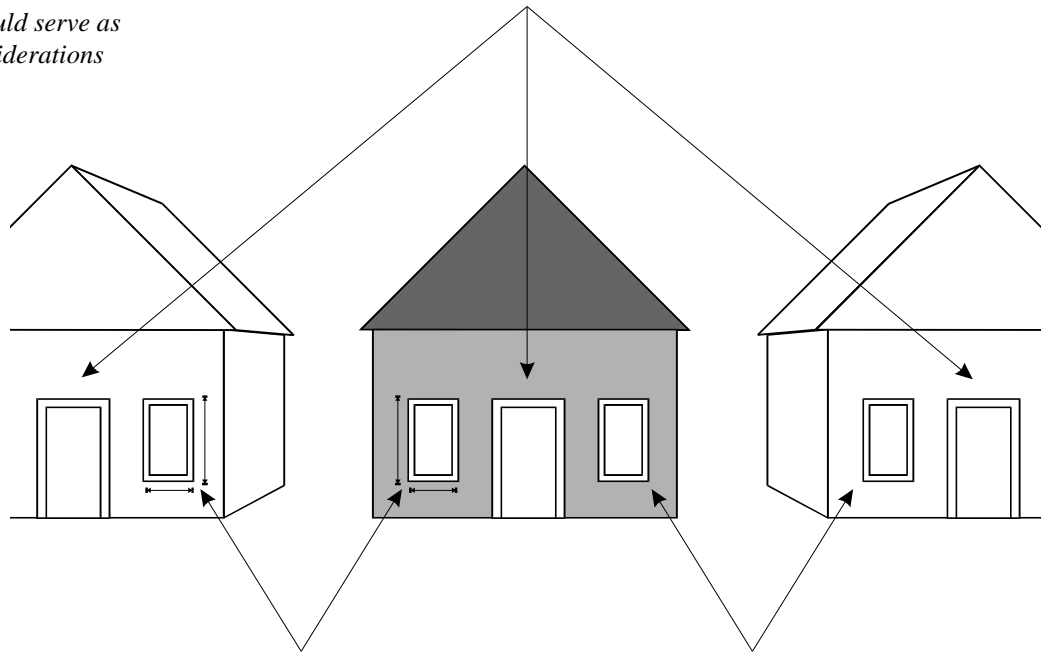


The historic district's streetscapes are defined by the facades or "faces" along the street. The openings of historic houses such as windows, doors, and porches – which are essentially an open room – create a pattern that is repeated by their neighbors down the block. This common use of openings creates a pleasing rhythm in historic neighborhoods. New buildings should continue to use these elements in a similar manner so that this rhythm is not broken.

- Use openings of similar size, shape, and configuration as those present on historic buildings within the district.
- Use true divided light or simulated divided light windows for sashes with divided lights. Flat or sandwiched muntins are inappropriate.
- Place and space openings in a manner similar to that of nearby historic homes.
- Design front porches for new homes similar to those of nearby historic homes.

*similar symmetry or asymmetry*

*When designing new construction in a historic district, surrounding properties should serve as guides. Below are some of the considerations when choosing openings.*



*similar opening dimensions*

*similar solid-to-void ratio*

*Large, elaborate windows generally are out of character in the historic residential area. Modern gable vents should be avoided too.*

**INAPPROPRIATE!**



***Avoid*** blank walls on front and side elevations of new construction.