

# *Cedartown Guidelines*

## RESIDENTIAL BLGs. MATERIALS & DETAILS



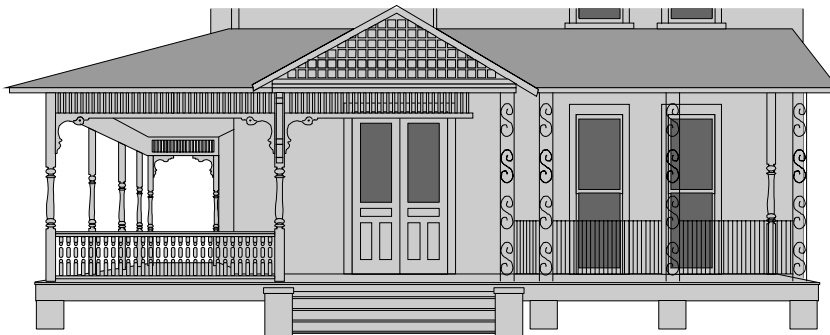
Exterior surfaces, whether applied or structural, convey information about history and style for both the building and district. Exterior treatments come in a broad variety of materials with different methods of application depending on the building system. Tied to the underlying structural system, these treatments often act, literally, as skin for the building. Ill-conceived changes in historic exteriors may result in structural damage extending well beyond the affect on the historic and aesthetic integrity of the district.

- Maintain and preserve historic siding and details.
- Leave unpainted historic masonry unpainted and uncoated.
- Repair damaged exterior materials in-kind and only in the area of damage, rather than total replacement.
- Replace damaged details with details of matching material and matching design.
- Restore missing details to historic buildings when documentation of those elements are available. Do not add details to historic buildings which were not known to have existed.
- Use the same mortar mix, tooling, and mortar color as the historic masonry pointing when repointing brick on historic buildings. Use a qualified, professional mason.
- Use the gentlest means possible to clean exterior materials. Do not sandblast or use a wash with a pressure greater than 100 psi.
- Do not cover historic buildings with modern siding materials such as aluminum, vinyl, and synthetic stucco (E.I.F.S.).



*Historic siding materials such as this house's brick and stickwork **should be preserved.***

***Changing or covering siding materials is inappropriate, for example adding stucco and lapsiding to the house in the example above.***



*Decorative details are the principal indicator of a building's architectural style. The loss of such details, even from a limited area on the structure (such as the porch shown here), significantly impacts the visual character of the individual property and diminishes the district as a whole.*

*Stock porch posts and railings found at home improvement stores are generally not the same scale as original historic elements. Replacements should be milled to match the historic posts and balusters.*

