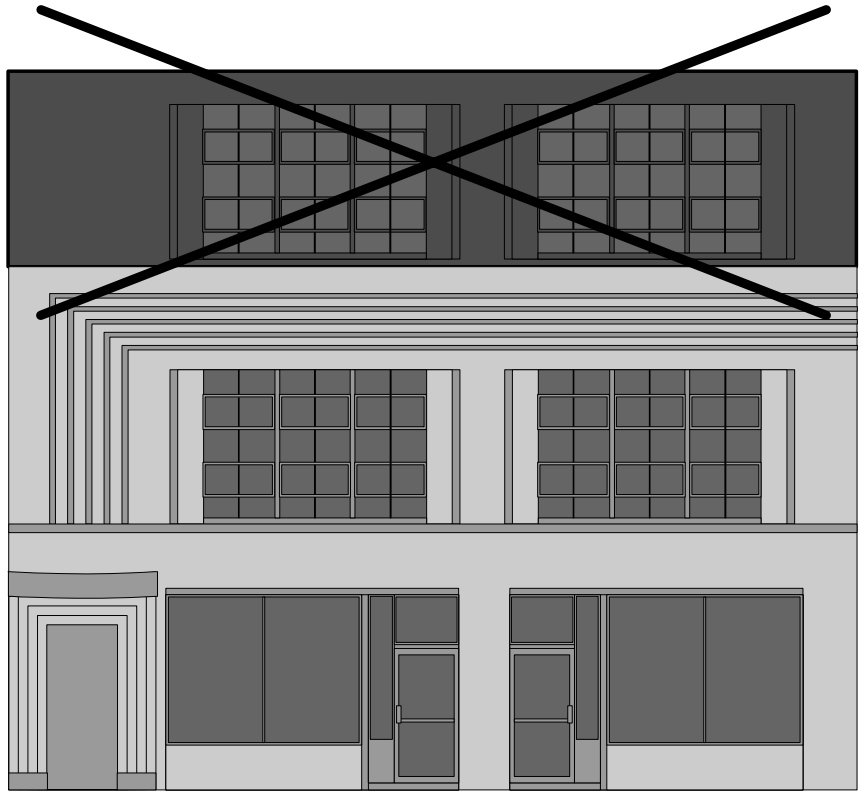




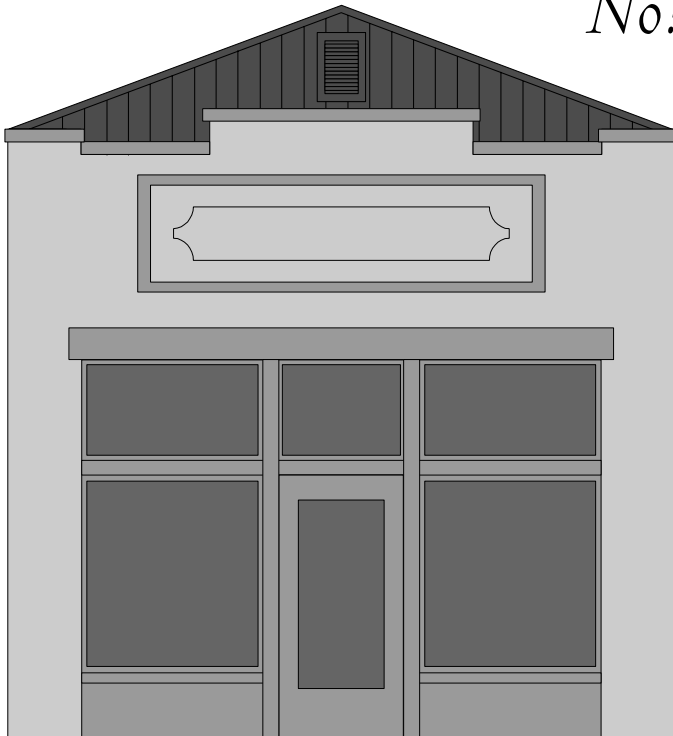
Roofs represent a highly visible and significant character defining feature of any structure. In the core area of the downtown historic district, rooflines of buildings are distinguished primarily by the use of parapets, false walls which create a distinctive silhouette and hide a low pitched roof. A majority of Cedartown's historic commercial buildings have simple, straight parapets, though a few examples are shaped or stepped or have decorative finials which indicate a particular architectural style.

- Maintain the existing pitch and shape of historic roofs as seen from the public view. Changes hidden by existing parapets may be considered.
- Replace existing historic roofing materials with the same type of roofing material. Changes in materials hidden by existing parapets may be considered.
- Retain historic secondary features, such as chimneys or finials, and character defining materials which contribute to design.
- Maintain historic chimneys.
- Preserve historic skylights whenever possible.
- Replace incompatible, non-historic roof designs with a traditional parapet/low slope roofs.

*Construction of additional stories, even if matching an existing upper floor, destroys the original scale of the building.*



*No!*



*Roofs of historic commercial buildings are generally hidden behind parapets. Changes to roofs should not alter this appearance.*