



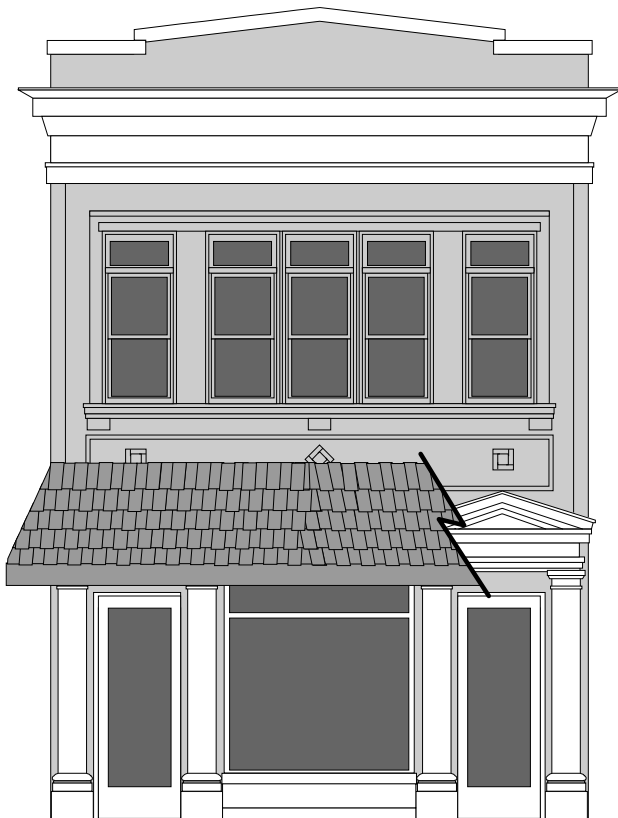
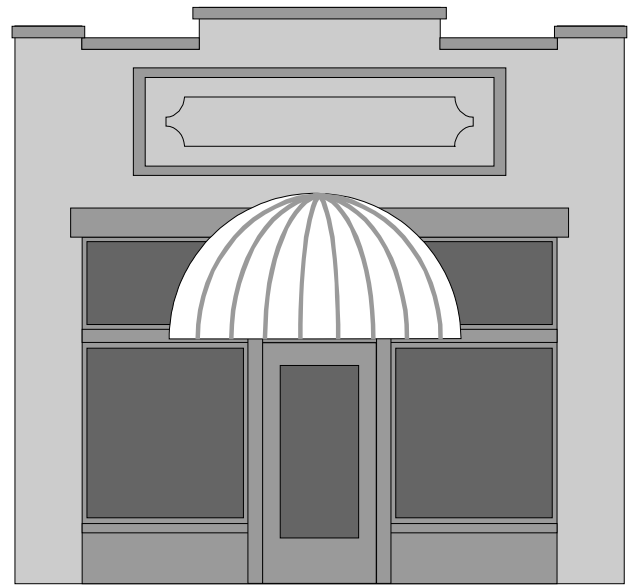
Downtown merchants have traditionally used awnings to shelter the walks in front of their businesses. Awnings create a haven from the weather for potential customers encouraging them to view display windows. Awnings also served to ornament buildings and shade interiors.

- Maintain historic awnings and canopies.
- Use traditional awning materials. Fabric is the most appropriate choice for awnings. Internally lit awnings are not appropriate in the historic district.
- Match awnings shape to the shape of the window or door opening.
- Fit an awning within the frame of the window or doorway without covering architectural details.
- Traditional shed-style, sloping, fabric/canvas awnings are encouraged.
- Flat metal canopies are also appropriate, though more so on twentieth century buildings than on earlier buildings.



Awnings **should** fit within the openings and avoid covering architectural details such as cornices.

Awnings **should not** be shaped differently than the openings where they are used.



Awnings **should not** use inappropriate materials, such as wooden shingles, nor should they cover architectural details such as door surrounds or decorative brick work.